



DARK1616M

**DANTE NETWORK AUDIO
16 INPUT 16 OUTPUT AES3 & MIC/LINE LEVEL
ANALOGUE INTERFACE**

PRODUCT DETAILS



GlenSound Electronics Ltd

Thank you for choosing a new GlenSound product.

All rights reserved.

Information contained in this manual is subject to change without notice, if in doubt please contact us for the latest product information.

If you need any help with the product then we can be contacted at:

GlenSound Electronics Ltd
The Design Buildings
1 – 6 Brooks Place
Maidstone
Kent
ME14 1HE
United Kingdom

Telephone: +44 (0) 1622 753662

EMAIL ADDRESSES

General enquires: office@glenSound.com

Technical enquires: techinfo@glenSound.com

Sales enquires: sales@glenSound.com

PRODUCT WARRANTY:

All equipment is fully tested before dispatch and carefully designed to provide you with trouble free use for many years.

We have a policy of supporting products for as long as possible and guarantee to be able to support your product for a minimum of 10 years.

For a period of one year after the goods have been despatched the Company will guarantee the goods against any defect developing after proper use providing such defects arise solely from faulty materials or workmanship and that the Customer shall return the goods to the Company's works or their local dealer.

All non-wear parts are guaranteed for 2 years after despatch and any defect developing after proper use from faulty materials or workmanship will be repaired under this warranty providing the Customer returns the goods to the Company's works or their local dealer.



SAFETY WARNING



The DARK1616M contains no user serviceable parts and **must not** be disassembled in any way.

CE

EU DECLARATION OF CONFORMITY FOR:

DARK1616M

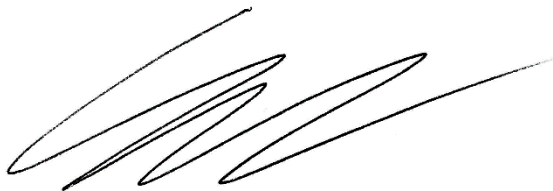
Sixteen channel AoIP, AES3/Analogue I/O interface

This declaration of conformity is issued under the sole responsibility of the manufacturer.

This equipment is manufactured by Glensound Electronics Ltd of Brooks Place Maidstone Kent ME14 1HE is CE marked and conforms to the following Union harmonisation legislation:

Low Voltage Directive:	EN60065 and EN62368-1:2014
Emissions:	BS EN55032:2015
Immunity:	BS EN55035:2017

Signed for and on behalf of Glensound Electronics Ltd.



Gavin Davis, Managing Director
Maidstone, Kent, England

Date: 22/08/2018

RoHS DIRECTIVE

EC directive 2002/95/EC restricts the use of the hazardous substances listed below in electrical and electronic equipment.

This product conforms to the above directive and for this purposes, the maximum concentration values of the restricted substances by weight in homogenous materials are:

Lead	0.1%
Mercury	0.1%
Hexavalent Chromium	0.1%
Polybrominated Biphenyls	0.1%
Polybrominated Diphenyl Ethers	0.1%
Cadmium	0.01%

WASTE ELECTRICAL AND ELECTRONIC EQUIPMENT REGULATIONS 2006 (WEEE)

GlenSound Electronics Ltd is registered for business-to-business sales of WEEE in the UK our registration number is:

WEE/JJ0074UR

GLENSOUND DARK1616M

Handbook Contents

Issue 5

Description

Page No.

Contents

PRODUCT WARRANTY:	3
OVERVIEW	8
DARK1616M FRONT PANEL LAYOUT	9
DARK1616M REAR PANEL LAYOUT	11
SIMPLIFIED BLOCK DIAGRAM	13
CONNECTING THE DARK1616M TO A DANTE NETWORK	14
Getting Dante Controller	14
Connecting Dark1616Ms To The Network	14
Audio Over IP Network	14
Running Dante Controller	15
Dante Controller TIP	15
WINDOWS 10 REMOTE CONTROL APPLICATION	16
GLENCONTROLLER App	17
Running The App	17
Starting The App	17
App Controls	18
Channel Controls	20
UPDATING FIRMWARE	21
UPDATING THE BROOKLYN MODULE	27
AES67 MODE	28
WIRING INFORMATION	31

OVERVIEW

The Glen sound DARK1616M is an analogue to digital and digital to analogue converter designed to connect AES3 and mic/ line level analogue audio circuits to a Dante audio network.

Dante network audio is a common protocol for distributing high quality linear audio over standard IP networks and it is widely used by many audio equipment manufacturers. The Glen sound Dark1616M Dante audio interface will be compatible with any other manufacturers Dante audio interface. Further details of Dante network audio can be found at www.audinate.com

Being designed for live on-air broadcast applications the Glen sound Dark1616M has been designed with multiple redundancy capabilities. It has 2 mains power sources and it also has fully redundant network connections for both Copper & Fibre circuits.

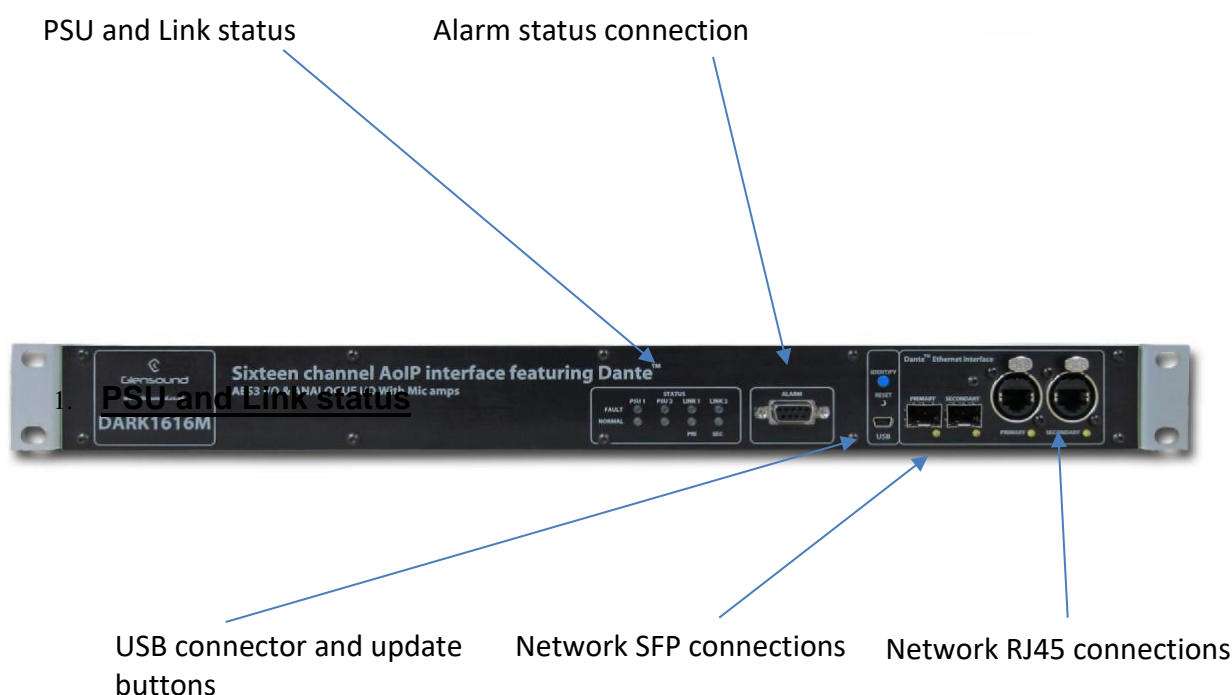
The Dark1616M provides 8 balanced AES3 inputs and 8 balanced AES3 outputs to the Dante network and 16 analogue mic/ line level inputs to the Dante network and 16 analogue line level (0dB) outputs from the Dante network on rear panel D25 connectors wired to AES59 (also known as the Tascam standard).

The analogue and AES3 outputs are both always used and the same audio signal from the Dante network that is presented on one channels AES3 output will appear as an analogue audio signal on the equivalent analogue output.

For each channel only 1 audio input signal can be sent to the Dante network, the AES3 input has priority over the analogue. Therefore if there is both an analogue and AES3 input signal for one channel only the AES3 will be sent to the Dante network.

A Windows10 application (that can be downloaded from the download tab of the DARK1616M product information page on our web site) allows remote control of the gain settings of the microphone amplifiers and also provides level indication of each channel.

DARK1616M FRONT PANEL LAYOUT



There are 4 red LEDs and 4 green LEDs that illuminate depending on the status of the link. Red indicates no connection, green indicates a successful connection.

For example, if you have connected the DARK1616S to two separate PSUs, only one of which works then you will have a red 'Fault' LED illuminate to warn you that there is no power detected on the connection that is not receiving mains power.

2. Alarm status connection

This 8-way female D-type connector will report the failure of a link status if one is detected whilst in operation.

3. USB connector and update buttons

The MINI USB connection allows the firmware of the DARK1616S to be updated. To prepare the DARK1616S for a firmware update; power on the unit, press and hold down the reset button, press and hold down the identify button, release the reset button and then release the identify button a second after.

4. **Network SFP Connections**

There are 2 standard network data SFP sockets provided to allow redundant network connectivity if using Dante network audio protocol. They are both gigabit network connections. They accept standard SFP modules. The status LEDs flash to show when data is being correctly communicated with the attached switch.

If you require SFP modules then please email sales@glen sound.com for a quotation.

Network Note

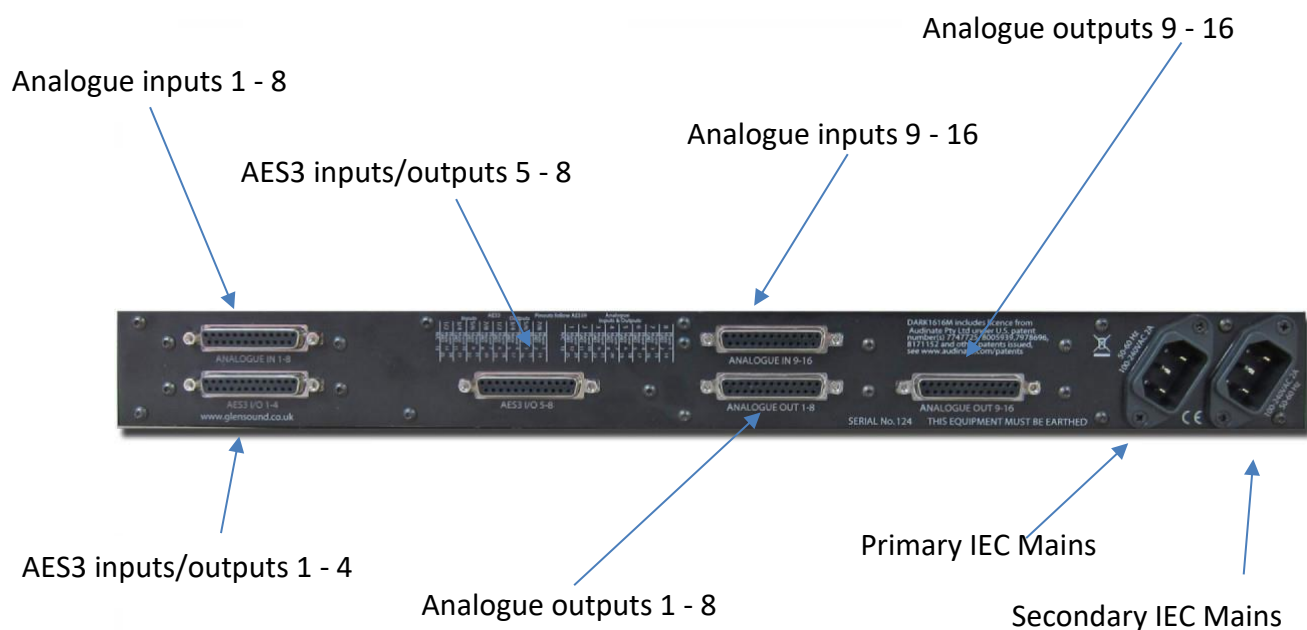
Factory default is to have the SFP & RJ45 sockets set to work in redundant mode.

It is possible using Dante controller to set these network interfaces to work as a network switch instead of the redundant mode, meaning other network equipment can be connected to them.

5. **Network RJ45 connections**

There are 2 standard network data RJ45 sockets provided to allow redundant network connectivity if using Dante network audio protocol. They are both gigabit network connections. The status LEDs flash to show when data is being correctly communicated with the attached switch.

DARK1616M REAR PANEL LAYOUT A detailed wiring table for the



pins of all rear panel connections can be found at the end of the manual.

1. Analogue inputs 1 - 8

A 25-way female D-type connector allows a breakout cable to be attached to send analogue line level (0dB) signals **in** to the DARK1616S on channels 1 - 8. This connector is wired to AES59 standard (also known as the Tascam standard).

The signals can then be routed via Dante to anywhere on a network or back out of the DARK1616S via it's analogue or AES3 digital outputs.

2. AES3 inputs/outputs 1 - 4

A 25-way female D-type connector allows a breakout cable to be attached to send and receive 1 – 4 balanced digital AES3 signals. This audio can be routed to anywhere on a network via Dante.

AES3 digital inputs signals always take priority over analogue inputs.

Therefore, sending an input to channel 1 in both digital and analogue domains will result in the digital signal being accepted and the analogue signal being disregarded.

Despite this, the DARK1616S will always output audio simultaneously to both digital and analogue connections.

3. AES3 inputs/outputs 5 – 8

A 25-way female D-type connector allows a breakout cable to be attached to send and receive balanced digital AES3 signals on channels 5 – 8. This audio can be routed to anywhere on a network via Dante.

4. Analogue outputs 1 – 8

A 25-way female D-type connector allows a breakout cable to be attached to send analogue audio signals **out** of the DARK1616S on channels 1 – 8. This connector is wired to AES59 standard (also known as the Tascam standard).

The signals output from this connection can be audio received via the Dante network.

5. Analogue inputs 9 – 16

A 25-way female D-type connector allows a breakout cable to be attached to send analogue line level (0dB) signals from channels 9 – 16 **in** to the DARK1616S. This connector is wired to AES59 standard (also known as the Tascam standard).

The signals can then be routed via Dante to anywhere on a network or back out of the DARK1616S via it's analogue or AES3 digital outputs

6. Analogue outputs 9 – 16

A 25-way female D-type connector allows a breakout cable to be attached to send analogue signals **out** of the DARK1616S on channels 9 – 16. This connector is wired to AES59 standard (also known as the Tascam standard).

The signals output from this connection can be audio received via the Dante network

7. Primary IEC Mains

The standard IEC mains plug accepts external AC voltages of 100 – 240 VAC +/- 10%. There is a non-accessable internal fuse for this input.

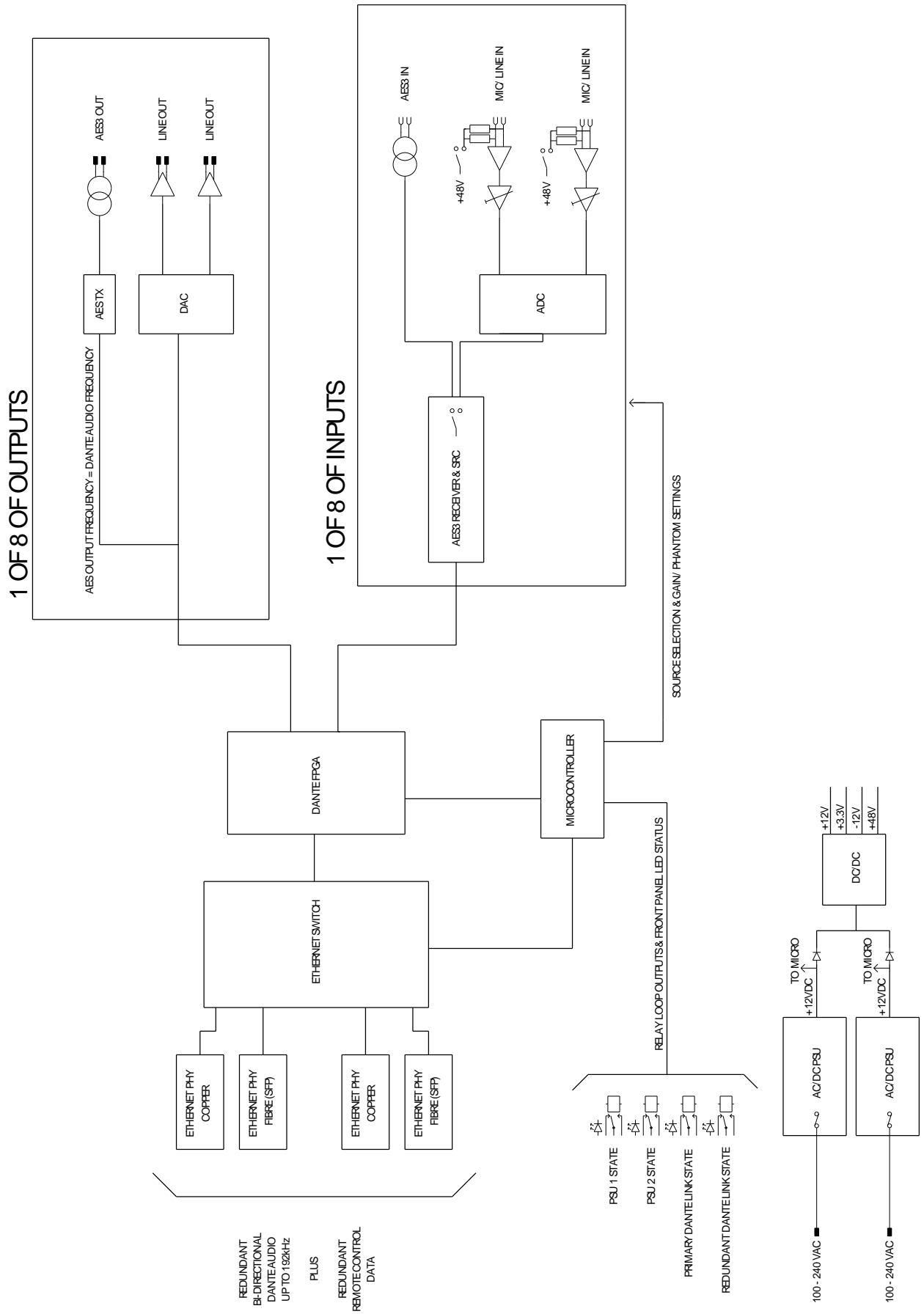
The DARK1616S is designed to operate with either primary or secondary mains sources or both for power redundancy.

8. Secondary IEC Mains

The standard IEC mains plug accepts external AC voltages of 100 - 240 VAC +/- 10%. There is a non-accessable internal fuse for this input.

The DARK1616S is designed to operate with either primary or secondary mains sources or both for power redundancy.

SIMPLIFIED BLOCK DIAGRAM



CONNECTING THE DARK1616M TO A DANTE NETWORK

The Dark1616M is a network audio device utilising the reliable and versatile Dante audio over IP protocol. Dante is a proprietary system (although very widely used) the originators of which are Audinate.

The information below is only meant as a very basic guide. Full details of the power of Dante network audio and instructions for using it can be found at

www.audinate.com

Getting Dante Controller

If you are connecting the inferno to a new Dante network the first thing you will need to do is to get the free Dante controller software from Audinate.

This can be downloaded by visiting Audinate's web site at www.audinate.com

Connecting Dark1616Ms To The Network

Dark1616Ms can be connected to the network that you are going to use for your audio distribution simply by plugging in either, and, or any of the network connections on the front. Once connected to the network it will be possible to see the Dark1616M from within the Dante controller and route its' audio circuits.

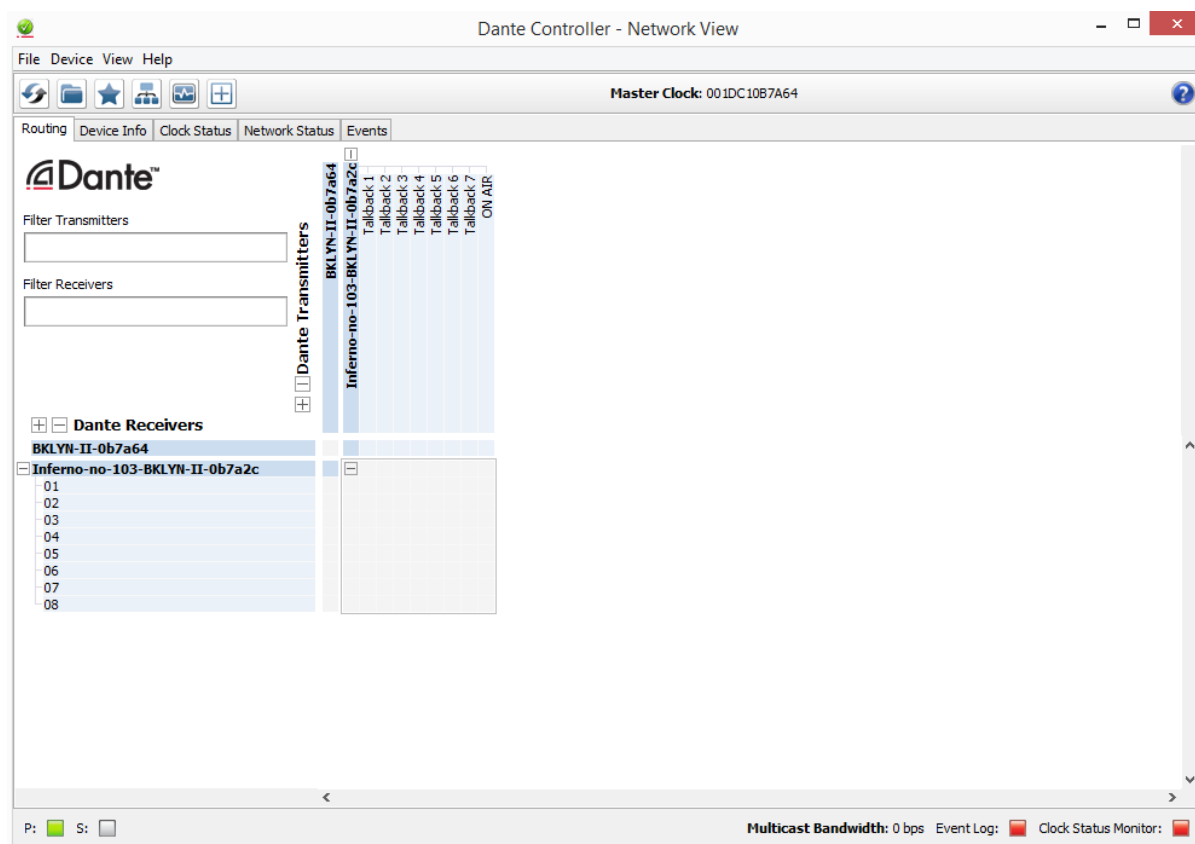
Audio Over IP Network

We strongly recommend that you consider your network topology carefully and would not recommend sharing broadcast audio and general data on the same network.

For more details of audio over IP network structure please visit www.audinate.com

Running Dante Controller

At the time of writing this manual the Dante Controller looks as per the screenshot below:



The DARK1616M will have been named at the factory during test to allow them to be identified by the Dante controller.

The format used for the factory name is:

'Dark1616M-no-103-BKLYN-II-ob7a2c'

Where 'Dark1616M-no-103' refers to the Glensound product i.e. Dark1616M and its serial no (in this case 103) and 'BKLYN-II-ob7a2c' refers to the units Dante Brooklyn II module and its MAC address.

Dante Controller TIP

If you have never run Dante controller before then make sure that on the bottom left of the Dante controllers' screen 'P' or 'S' is next to a green square as this indicates that it is connected to a network. By clicking 'P' or 'S' a pop up box opens to allow you to set what network interface the controller is using.

WINDOWS 10 REMOTE CONTROL APPLICATION

1. General

A Windows 10 Application called GlenController is provided to allow configuration and setup of the Dark1616S. It allows configuration items such as AES3 output clock source and digital Fs levels to be set and also allows day to day operations such as monitoring levels and selecting input sources.

GlenController is our own application that controls a number of different products.

2. Installing GlenController

Full details of the installation process and location of files required to install GlenController can be found on its web page:

<http://www.glen-sound.co.uk/product-details/glencontroller/>

3. Uninstalling GlenController

Find the app in the 'All apps' list then right-click and select 'Uninstall'.

GLENCONTROLLER App

The Dark1616M has a remote control utility called GlenController. This app allows the Dark1616M to be set up and controlled remotely, things such as mic gain, phantom power, filtering and metering can all be controlled/ seen via the app.

The below guide is meant as an indication of the facilities available on the app, but being software developments are likely to be constantly evolving.

Running The App

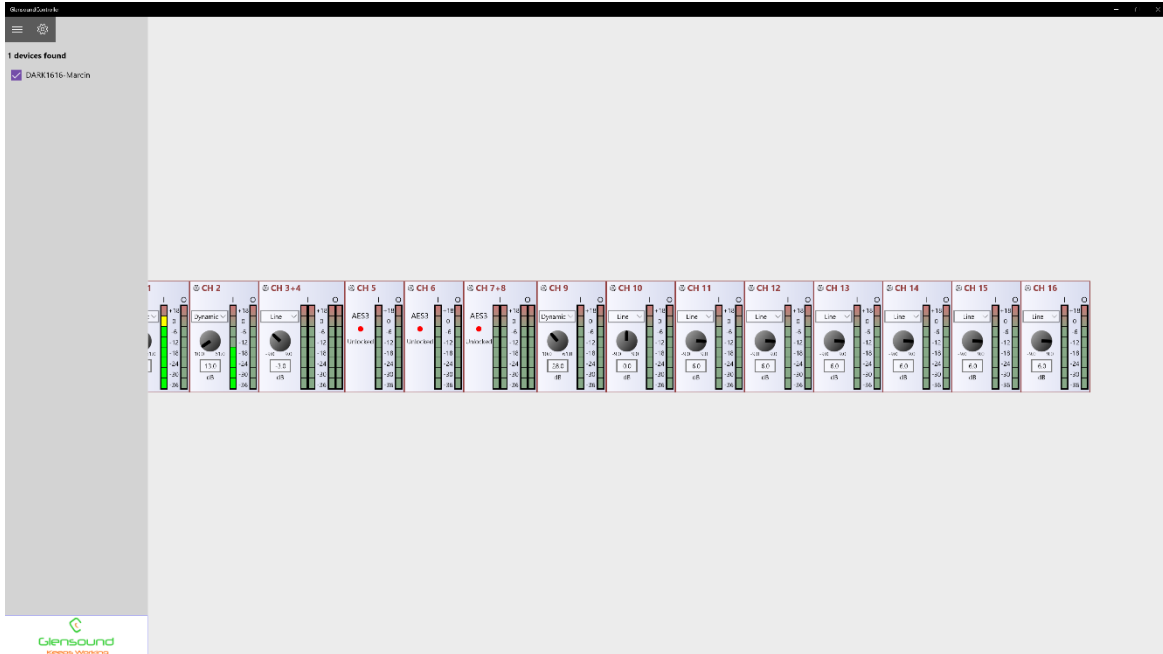
To run GlensoundController, click the Windows icon in the bottom left corner of the screen, and find it in the 'All apps' list and double click.

Starting The App

When the app first starts it looks for compatible devices across your network, and it will show a list of any available units that it can connect to on the left hand side of the screen.



Tick the box against the name of the device that you want to control and it will appear in the main screen area:

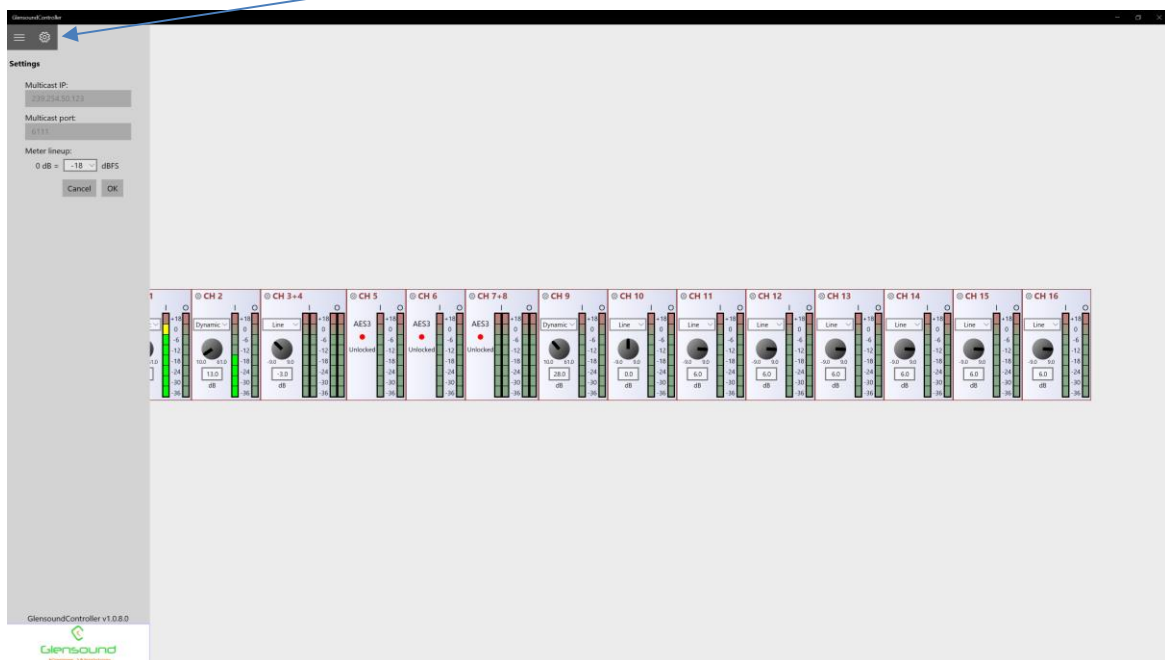


App Controls

Pressing this button toggles the side bar in and out:

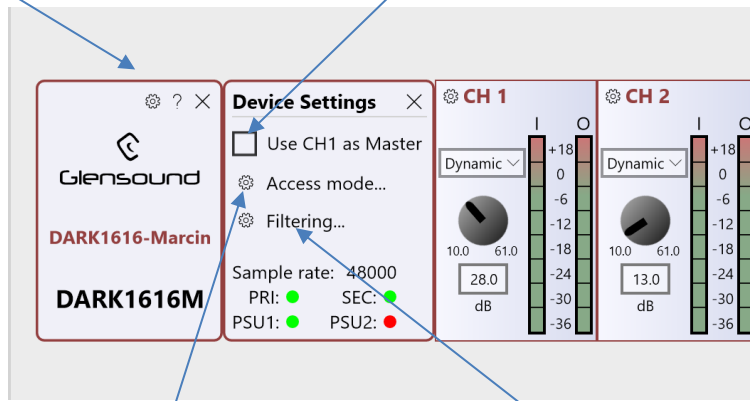


Pressing the settings button, shows app version details, multicast ip address & port and meter setup information.



Pressing the settings button opens up device settings

'Use CH1 as Master' if this tick box is selected the all channels settings follow CH 1



Access mode setup allows sole or shared control of the Dark1616M by different PCs running the App and the control can also be password protected

Filtering setup allows access to the filtering controls for the ADCs (analogue to digital convertors), changing these settings only alters the analogue inputs

Channel Controls

Pressing this button toggles the side bar in and out:

The screenshot shows the control interface for the DARK1616M. It includes a main window with the Glensound logo and model name, followed by channel controls for CH 1, CH 2, CH 3+4, and CH 5. Each channel has a gain knob, a dynamic range selector, and two level meters (I and O). A central Settings panel allows switching between Mono, Auto, Analogue, and Digital modes, and shows the AES3 lock status.

Pressing the settings button opens on 1 channel opens up a stereo pair of channels settings

The 'I' meter shows the level of the channels input. Which can be adjusted using the gain control. The 'O' meter shows the output level of the source received from the Dante network.

The mono/ stereo switch selects if a pair of inputs should be treated as a stereo pair.

Gain Control:
Adjusting the gain 'knob' controls the gain applied to the channels input in 3dB steps. The box below shows the actual gain currently being applied.

Use this drop down box to select the input type

The 'Auto', 'Analogue', 'Digital' selection assigns which input is selected, In 'Auto' mode Digital takes priority if a valid AES3 locked signal is received.

UPDATING FIRMWARE

The DARK1616M is a complex digital audio system comprising of a DSP and several Micro Controllers. All these items run software and may need to be occasionally updated.

Equipment needed

- A windows based PC
- USB Type A to Mini B cable
- A copy of 'DfuSe Demo' software
- The latest firmware from Glensound
- A DARK1616M and mains power

Instructions

1. Download and install DfuSE Demo

'DfuSE Demo' is a firmware updating tool that is required for loading new firmware on to the DARK1616M.

It can be downloaded from the STMicroelectronics website found here: <https://goo.gl/AbzhsA>. It is the file named "STSW-STM32080".

Once you have downloaded this file you will need to extract the .exe "DfuSe_Demo_V3.0.5_Setup.exe", then run and install it.

2. Install DFuSE driver

Once DFuSE is installed, navigate to the following location on your machine:

C:\Program Files (x86)\STMicroelectronics\Software\DfuSe
v3.0.6\Bin\Driver\Win10

You now need to run the following driver.

- If your machine is 64 bit run 'dpinst_amd64.exe'
- If your machine is 32 bit run 'dpinst_x86.exe'

This will install the driver you need.

3. Download firmware

Contact Glensound for the latest firmware available. Sales@glensound.com


Name	Date	Type	Size
 Dark1616S1.1.1.dfu	21/03/2018 11:18	DFU File	47 KB

Figure 1 Example filename

4. Connect To A PC

Connect the DARK1616M to the PC via the USB cable. The Mini USB connector is located on the front panel of the DARK1616M.



Figure 2 Front panel USB connector

5. Firmware update preparation

To prepare the DARK1616M for a firmware update;

1. Power on the unit
2. Press and hold down the reset button
3. Press and hold down the identify button
4. Release the reset button and then release the identify button a second after

Your PC should make an audible sound when this process is successful as windows is detecting a new USB device.

6. Loading the firmware

Now open DfuSe Demo.

If the DARK1616M successfully entered DFU mode then it will appear as 'STM Device in DFU Mode' under the 'Available DFU Devices tab'.

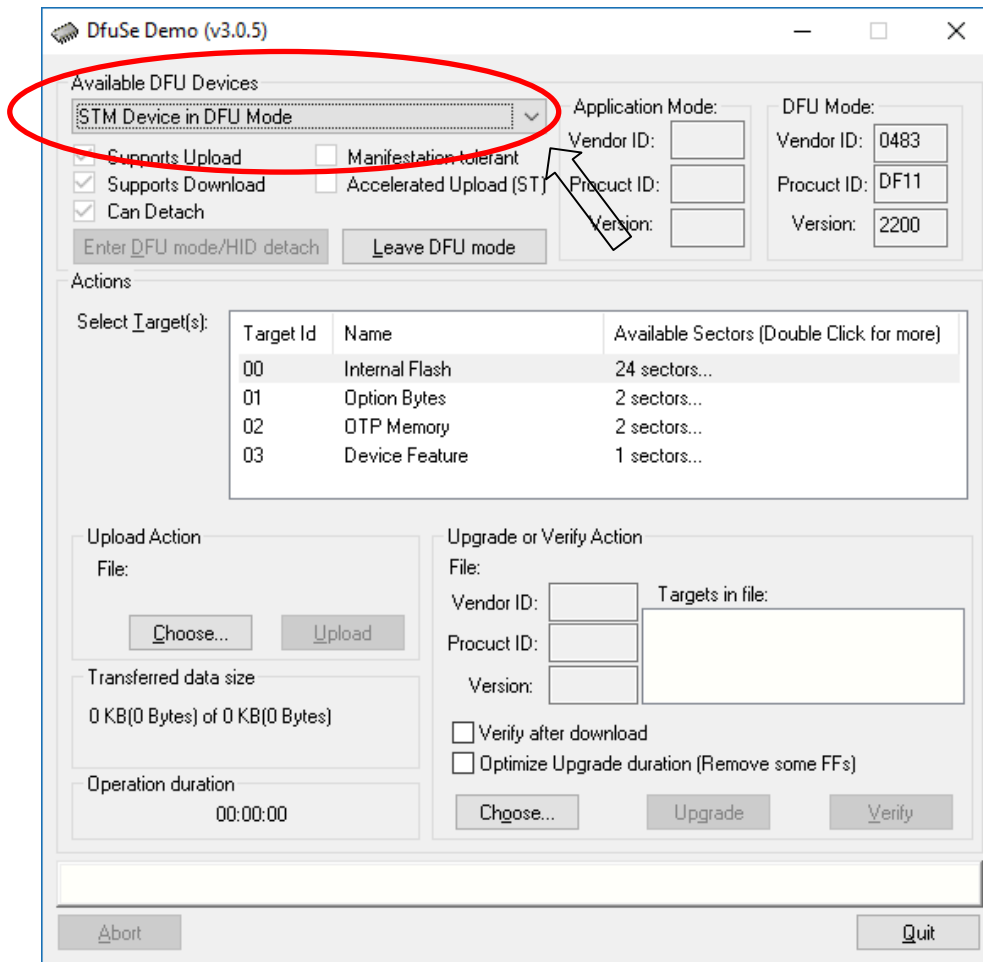


Figure 3 Device successfully recognised

Now the .dfu file needs to be selected so that DfuSe Demo knows the correct firmware to put on to the DARK1616M.

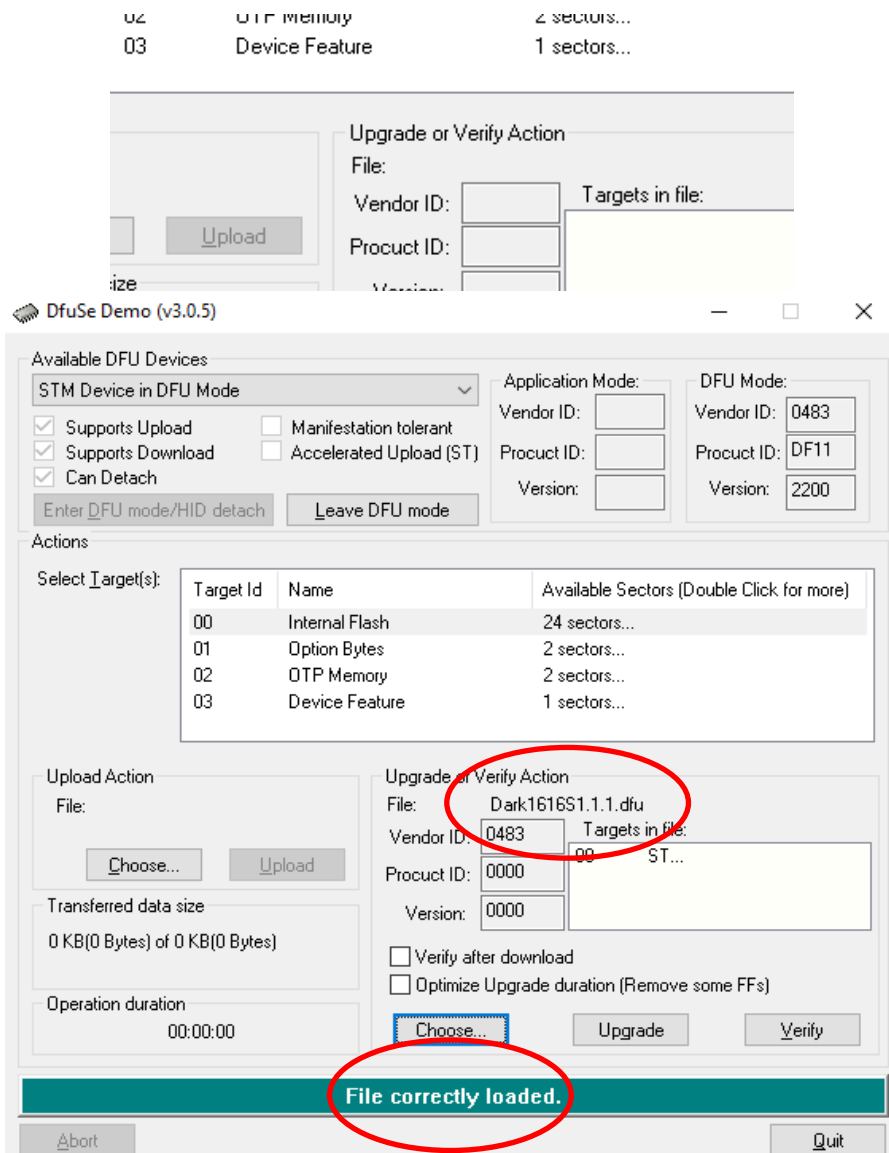


Figure 5 .dfu successfully loaded

Click choose and then select the.dfu file that you downloaded from the GlenSound website. This will be located in your downloads folder by default.

If the file loads successfully then it will read along the bottom 'File correctly loaded'.

7. Upgrading the DARK1616M firmware

The firmware is now ready to be put on to the DARK1616M. Tick the 'Verify after download' box first and then click 'Upgrade'.

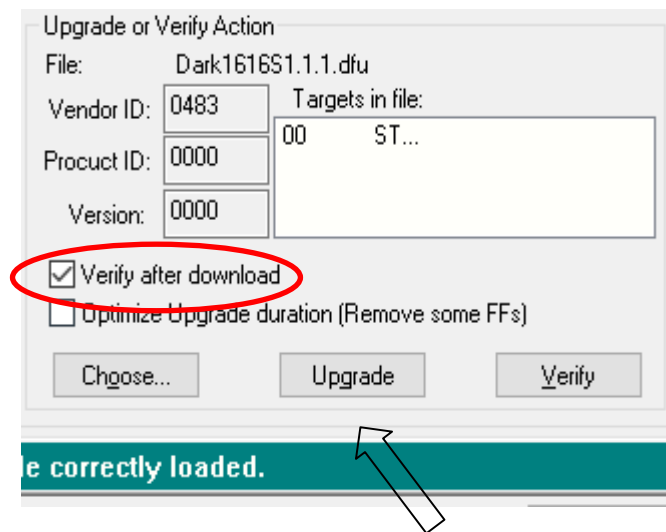


Figure 6 Upgrade

Click yes to proceed.

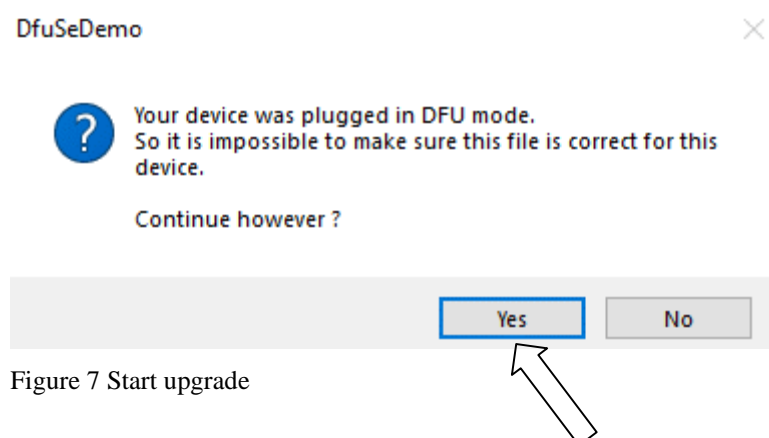


Figure 7 Start upgrade

The progress bar along the bottom will show the status of the operation.

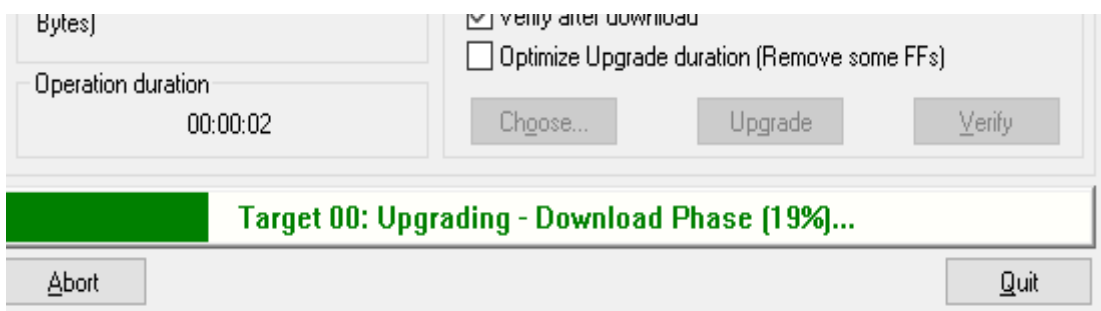


Figure 8 Upgrade status

If the operation was successful, DfuSe Demo will report that “Target 00: Verify Successful!”.

You may also see that it will report how much data was successfully transferred.

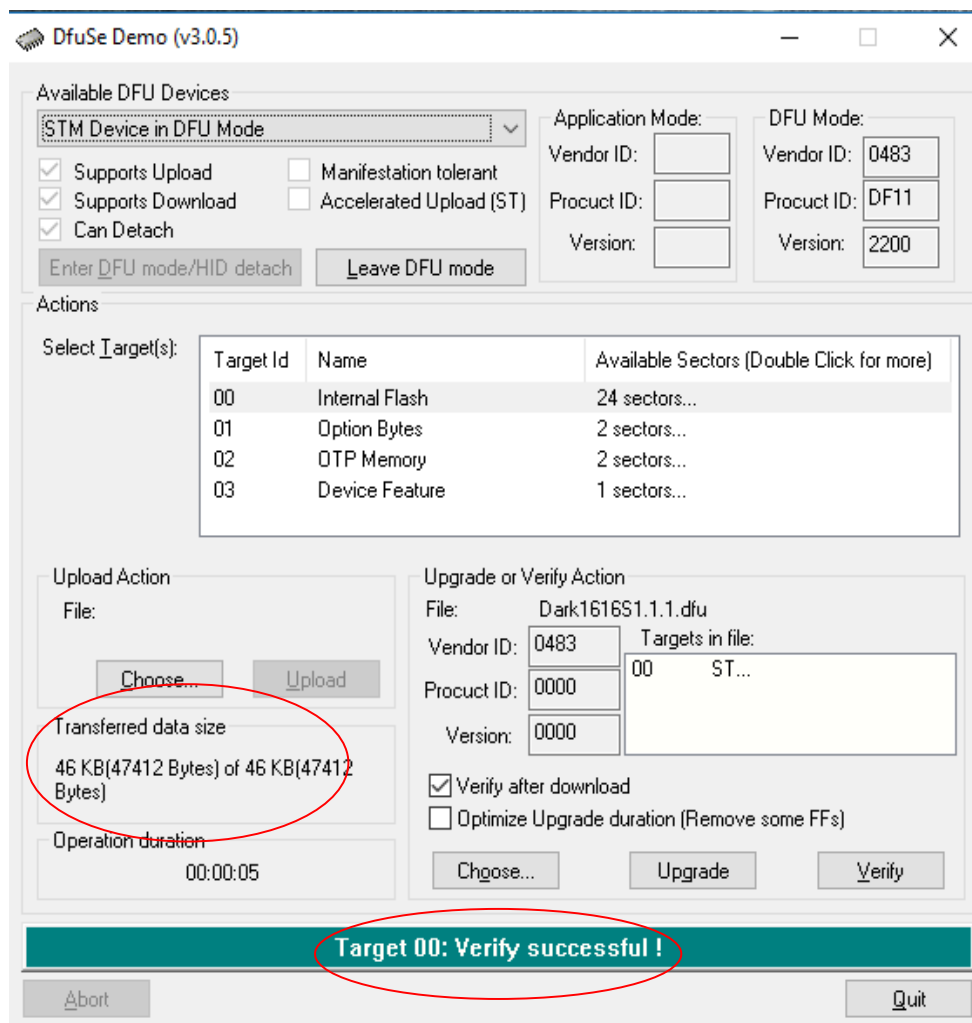


Figure 9 Successful upgrade!

8. Final steps

Now click “Leave DFU mode” to finish the procedure.

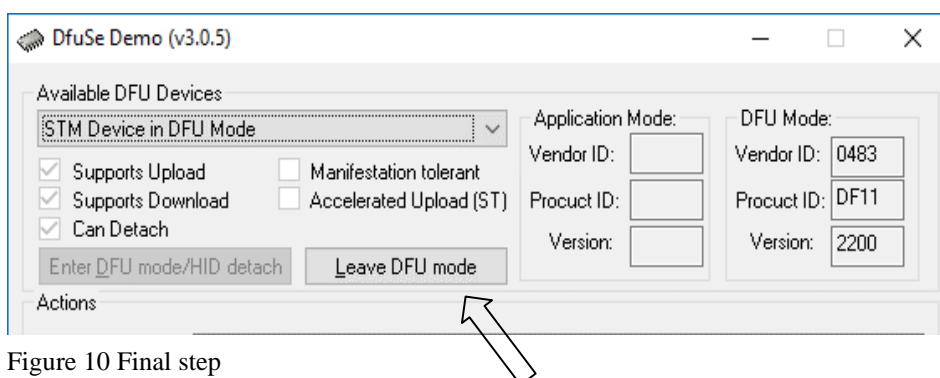


Figure 10 Final step

You may now disconnect the USB cable and continue to use the DARK1616M with the freshly updated firmware!

UPDATING THE BROOKLYN MODULE

The Brooklyn module is a device supplied by Audinate that does most of the processing for the actual Dante/ AES67 network audio streams. There is one Brooklyn module in each Dark1616M. We supply special code (a .dnt file) that sets up/ initiates the Brooklyn module and makes it work in particular way and we also run extra code on its internal microprocessor to make it work correctly with the Dark1616M.

1. Finding Out Current Installed Version

Open Dante Controller.

Open Device Info tab.

Double Click in the device that you are working with....a new window will open called 'Device View (name of device)'

Open the status tab.

The Firmware Version (of the Brooklyn module) will be found under the 'Device Information' heading.

2. Finding Out What The Latest Available Version Is

Contact Glensound for the latest firmware version available. sales@glen sound.com

3. Updating the Brooklyn Module

The firmware that runs on the Brooklyn module is updated using Audinate's Firmware updating tool. The updating tool and a user guide can be downloaded from Audinate's website:

<https://www.audinate.com/products/firmware-update-manager>

Please note we strongly advise that when you do the update that only your PC and the Dark1616M that you want to update are on the network to save accidentally updating the wrong Dante device.

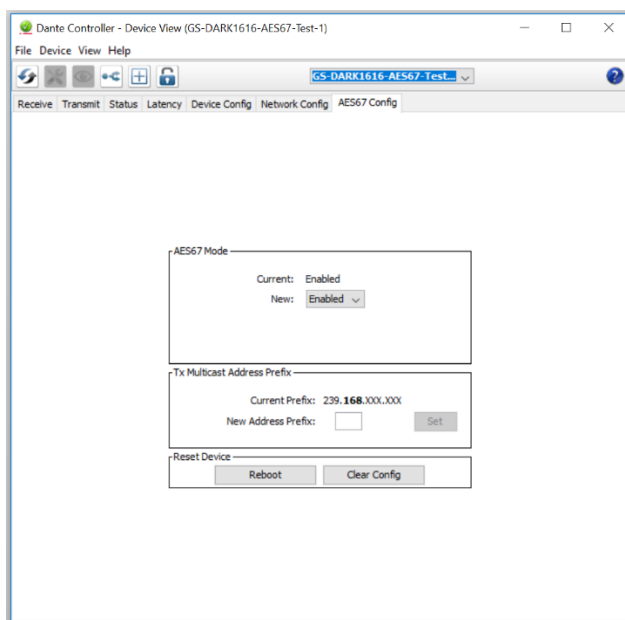
AES67 MODE

The Dark1616M uses a module from Audinate called a Brooklyn Module for its network audio interface. Audinate are the company behind Dante® and as such the module's primary network audio protocol is Dante, however Audinate have enabled their module to comply with AES67 and therefore the Dark1616S can be set to AES67 mode for interaction with other AES67 devices.

Please note however that Glensound are relying on Audinate's AES67 interface and are unfortunately not able to provide full AES67 support for the unit. AES67 support should be sought directly from Audinate.

1. Turning On AES67 Mode


If you want to use your Dark1616M on an AES67 network and it has not been set to AES67 mode then this can be set in Dante controller by double clicking the Dark1616M to open the Device View window where you will find an AES67 tab to enable AES67 support.

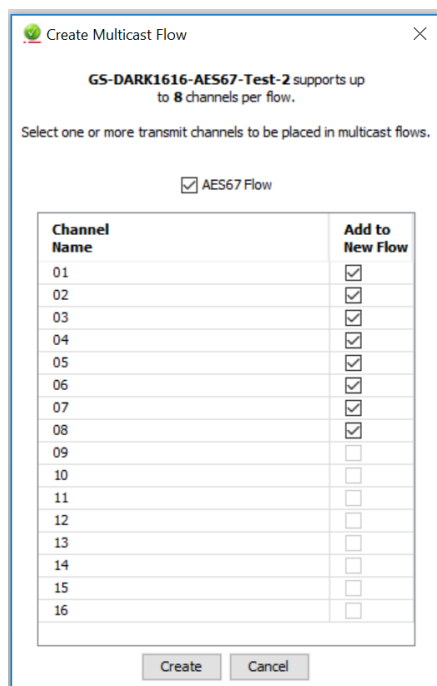


Once the AES67 drop down box has been enabled you'll have to reboot the Paradiso for the change to take effect. After the reboot go back to the AES67 tab and set the multicast prefix address to one that is suitable for your network.

2. Sending AES67 Audio

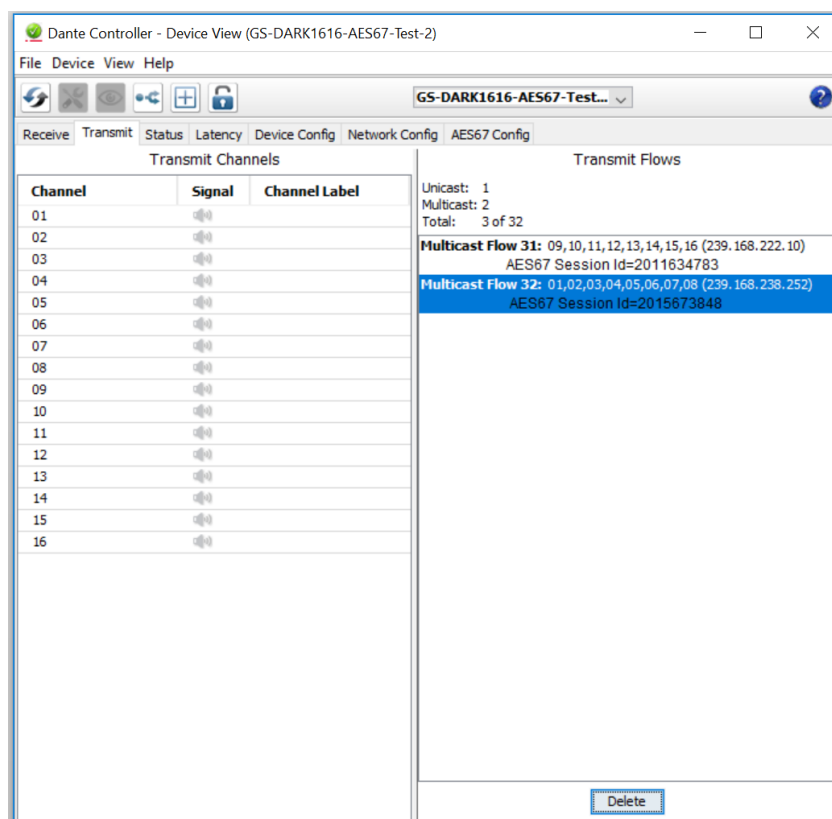
To transmit AES67 audio to the network a multicast flow must first be setup.

This is done by selecting the 'Create New Multicast Flow' Icon  in the Device View.



Tick the AES67 Flow check box, then select up to 8 channels to be included in the flow then click 'Create'

Once set the flows can be seen in the transmit tab of the device view.



3. Receiving AES67 Audio

Once a compatible AES67 stream is detected on the network by Dante Controller the AES67 flows will appear in the Dante Transmitters section in the Routing tab.

4. AES67 Restrictions

AES67 flows can only be generated with the following constraints:

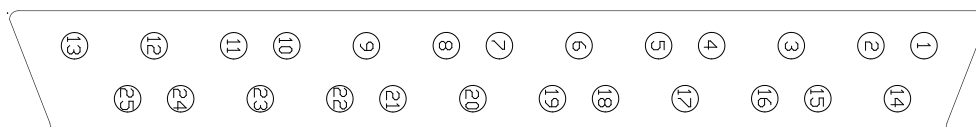
- Multicast Only
- Non-redundant
- Destination address in range 239.nnn.0.0 to 239.nnn.255.255 (239.nnn/16), port 5004
- 48kHz sampling rate
- 24 bit linear (L24) encoding
- 1 msec packet time
- Up to 8 channels per stream

Received AES67 flows have the following constraints:

- Multicast Only
- Non-redundant
- Destination address in range 239.nnn.0.0 to 239.nnn.255.255 (239.nnn/16), port 5004. Must match destination address range.
- 48kHz sampling rate
- L16 or L24 encoding
- 125usec, 250usec, 333usec, 1 msec packet time
- Up to 8 channels per stream

WIRING INFORMATION

AUDIO I/O D25 SOCKET PIN OUT



The wiring used for the DARK1616M conforms to AES59 (Also known as the Tascam standard). Pre-made break out cables are available from a number of suppliers.

ANALOGUE AUDIO INPUTS 1 - 8

Input 1	Pins 24, 12, 25	In Phase, Mate, Ground
Input 2	Pins 10, 23, 11	In Phase, Mate, Ground
Input 3	Pins 21, 9, 22	In Phase, Mate, Ground
Input 4	Pins 7, 20, 8	In Phase, Mate, Ground
Input 5	Pins 18, 6, 19	In Phase, Mate, Ground
Input 6	Pins 4, 17, 5	In Phase, Mate, Ground
Input 7	Pins 15, 3, 16	In Phase, Mate, Ground
Input 8	Pins 1, 14, 2	In Phase, Mate, Ground

ANALOGUE AUDIO INPUTS 9 - 16

Input 9	Pins 24, 12, 25	In Phase, Mate, Ground
Input 10	Pins 10, 23, 11	In Phase, Mate, Ground
Input 11	Pins 21, 9, 22	In Phase, Mate, Ground
Input 12	Pins 7, 20, 8	In Phase, Mate, Ground
Input 13	Pins 18, 6, 19	In Phase, Mate, Ground
Input 14	Pins 4, 17, 5	In Phase, Mate, Ground
Input 15	Pins 15, 3, 16	In Phase, Mate, Ground
Input 16	Pins 1, 14, 2	In Phase, Mate, Ground

ANALOGUE AUDIO OUTPUTS 1 - 8

Output 1	Pins 24, 12, 25	In Phase, Mate, Ground
Output 2	Pins 10, 23, 11	In Phase, Mate, Ground
Output 3	Pins 21, 9, 22	In Phase, Mate, Ground
Output 4	Pins 7, 20, 8	In Phase, Mate, Ground
Output 5	Pins 18, 6, 19	In Phase, Mate, Ground
Output 6	Pins 4, 17, 5	In Phase, Mate, Ground
Output 7	Pins 15, 3, 16	In Phase, Mate, Ground
Output 8	Pins 1, 14, 2	In Phase, Mate, Ground

ANALOGUE AUDIO OUTPUTS 9 - 16

Output 9	Pins 24, 12, 25	In Phase, Mate, Ground
Output 10	Pins 10, 23, 11	In Phase, Mate, Ground
Output 11	Pins 21, 9, 22	In Phase, Mate, Ground
Output 12	Pins 7, 20, 8	In Phase, Mate, Ground
Output 13	Pins 18, 6, 19	In Phase, Mate, Ground
Output 14	Pins 4, 17, 5	In Phase, Mate, Ground
Output 15	Pins 15, 3, 16	In Phase, Mate, Ground
Output 16	Pins 1, 14, 2	In Phase, Mate, Ground

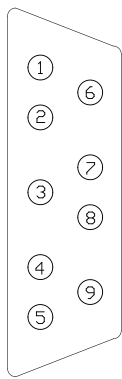
AES3 AUDIO INPUTS/ OUTPUTS 1 - 4

Input 1/2	Pins 24, 12, 25	In Phase, Mate, Ground
Input 3/4	Pins 10, 23, 11	In Phase, Mate, Ground
Input 5/6	Pins 21, 9, 22	In Phase, Mate, Ground
Input 7/8	Pins 7, 20, 8	In Phase, Mate, Ground
Output 1/2	Pins 18, 6, 19	In Phase, Mate, Ground
Output 3/4	Pins 4, 17, 5	In Phase, Mate, Ground
Output 5/6	Pins 15, 3, 16	In Phase, Mate, Ground
Output 7/8	Pins 1, 14, 2	In Phase, Mate, Ground

AES3 AUDIO INPUTS/ OUTPUTS 5 – 8

Input 9/10	Pins 24, 12, 25	In Phase, Mate, Ground
Input 11/12	Pins 10, 23, 11	In Phase, Mate, Ground
Input 13/14	Pins 21, 9, 22	In Phase, Mate, Ground
Input 15/16	Pins 7, 20, 8	In Phase, Mate, Ground
Output 9/10	Pins 18, 6, 19	In Phase, Mate, Ground
Output 11/12	Pins 4, 17, 5	In Phase, Mate, Ground
Output 13/14	Pins 15, 3, 16	In Phase, Mate, Ground
Output 15/16	Pins 1, 14, 2	In Phase, Mate, Ground

ALARMS D9 SOCKET PIN OUT



ALARMS

PSU1 Failure NC	Pin 1	Closed Contact when PSU1 fails
PSU1 Failure NO	Pin 6	Open Contact when PSU1 fails
PSU2 Failure NC	Pin 2	Closed Contact when PSU2 fails
PSU2 Failure NO	Pin 7	Open Contact when PSU2 fails
LINK Primary Failure NC	Pin 3	Closed Contact when Primary link fails
LINK Primary Failure NO	Pin 8	Open Contact when Primary link fails
LINK Secondary Failure NC	Pin 4	Closed Contact when Secondary link fails
LINK Secondary Failure NO	Pin 9	Open Contact when Secondary link fails
COMMON	Pin 5	Common for above (Internally linked to Ground)